

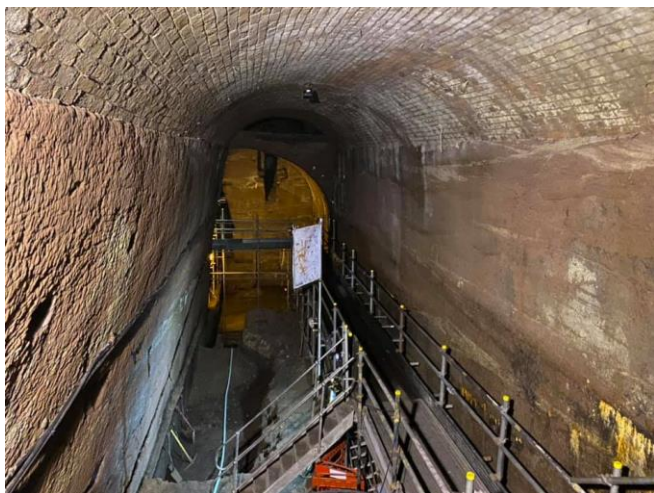
WHAT LIES BENEATH?

THE MYSTERIES OF THE WILLIAMSON TUNNELS, LIVERPOOL

The Williamson 'tunnels' are a hidden labyrinth of around 15 'tunnels' cut into Permo-Triassic sandstone in what is now a suburb of Liverpool. Joseph Williamson (1769-1840) was an affluent tobacco merchant residing in Edge Hill during Liverpool's heyday as a commercial port. Edge Hill at the time was an undeveloped sandstone outcrop overlooking the bustle of Liverpool city.

The Williamson Tunnels Heritage Centre provides an insight into the fascinating underground world created by Joseph Williamson in the early 19th Century. Take a guided tour through a section of the network of tunnels and view exhibitions which depict the life and times of one of Liverpool's most eccentric characters.

We will have a 45min guided tour from the Joseph Williamson Society. There is also a small Cafe and Exhibition area, available to look around before or after the tour.



Time: 10.15am until ~11.30am (Walk will leave at 10.30am)

Meet: The Old Stableyard, Williamson Tunnels Heritage Centre, Smithdown Lane, Liverpool, L7 3EE

Distance: <3 miles

Clothing: We recommend that sensible shoes and warm clothing are worn.

Accessibility: Regretfully, the tunnel network is not suitable for wheelchair users. Only the cafe, exhibition area and the toilets are accessible. Visitors with limited mobility are usually able to complete the tour. The tour does move slowly, and although there are steps and varying surfaces,

we usually find that a person who is capable of going up and down a staircase in a normal house can manage the tour.

Guide Dogs are welcome on site. Visitors will be able to feel the sandstone and brick tunnels, hear the history of Williamson and his network and feel some of the artefacts found in the tunnels.

Please let me know if you have additional needs, so we can make arrangements with the centre to ensure you have an enjoyable visit.

Dogs: This trip is not suitable for dogs. However, guide dogs are welcomed.

Booking: There are up to 15 spaces on the tour. To book a space on the trip email your **NAME and TELEPHONE CONTACT DETAILS** to Geologicalsociety.northwest@gmail.com.

Cost: You will need to bring **£4 CASH OR CARD PAYMENT** on the day.



Organised by the North West Regional Group of the Geological Society of London.

For further information contact the group secretary, Nick Smith at: Geologicalsociety.northwest@gmail.com

CPD: *These events may be considered for contributing to a recognised continuing professional development (CPD) scheme as part of personal development. Delegates should check their individual scheme requirements.*